

Acta Crystallographica Section E

## Structure Reports

Online

ISSN 1600-5368

## 2-Chloroquinazolin-4(3H)-one

Dong-Lei Cao,<sup>a</sup> Fan-Yong Yan,<sup>b\*</sup> Meng Wang,<sup>a</sup> Chu-Ying Li<sup>b</sup> and Li Chen<sup>a</sup>

<sup>a</sup>School of Materials Science and Engineering, Tianjin Polytechnic University, Tianjin 300160, People's Republic of China, and <sup>b</sup>School of Environment & Chemical Engineering, Tianjin Polytechnic University, Tianjin 300160, People's Republic of China

Correspondence e-mail: yfytju@yahoo.com

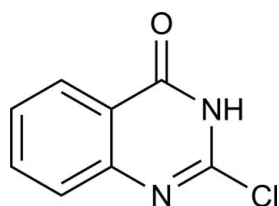
Received 8 April 2012; accepted 19 May 2012

Key indicators: single-crystal X-ray study;  $T = 113$  K; mean  $\sigma(\text{C}-\text{C}) = 0.002$  Å;  $R$  factor = 0.036;  $wR$  factor = 0.095; data-to-parameter ratio = 15.5.

In the title compound,  $\text{C}_8\text{H}_5\text{ClN}_2\text{O}$ , the quinazoline system is approximately planar with a maximum deviation from the least-squares plane of 0.034 (2) Å. In the crystal, classical  $\text{N}-\text{H}\cdots\text{O}$  and weak non-classical  $\text{C}-\text{H}\cdots\text{N}$  hydrogen bonds link the molecules.

## Related literature

For the synthesis, see: Feng *et al.* (2007). For applications of related compounds, see: Labuda *et al.* (2009).



## Experimental

## Crystal data

 $\text{C}_8\text{H}_5\text{ClN}_2\text{O}$  $M_r = 180.59$ Monoclinic,  $C2/c$  $a = 22.4315$  (16) Å $b = 3.7666$  (6) Å $c = 18.0640$  (13) Å

$\beta = 104.682$  (7)°  
 $V = 1476.4$  (3) Å<sup>3</sup>  
 $Z = 8$   
 Mo  $K\alpha$  radiation

$\mu = 0.46$  mm<sup>-1</sup>  
 $T = 113$  K  
 $0.20 \times 0.18 \times 0.14$  mm

## Data collection

Rigaku Saturn CCD diffractometer  
 Absorption correction: multi-scan  
 (*CrystalClear*; Rigaku/MS, 2005)  
 $T_{\min} = 0.914$ ,  $T_{\max} = 0.939$

6933 measured reflections  
 1749 independent reflections  
 1430 reflections with  $I > 2\sigma(I)$   
 $R_{\text{int}} = 0.038$

## Refinement

$R[F^2 > 2\sigma(F^2)] = 0.036$   
 $wR(F^2) = 0.095$   
 $S = 1.03$   
 1749 reflections  
 113 parameters

H atoms treated by a mixture of independent and constrained refinement  
 $\Delta\rho_{\text{max}} = 0.45$  e Å<sup>-3</sup>  
 $\Delta\rho_{\text{min}} = -0.23$  e Å<sup>-3</sup>

Table 1

Hydrogen-bond geometry (Å, °).

$D-H\cdots A$	$D-H$	$H\cdots A$	$D\cdots A$	$D-H\cdots A$
$\text{N2}-\text{H1}\cdots\text{O1}^{\text{i}}$	0.92 (2)	1.88 (2)	2.7840 (17)	166.5 (19)
$\text{C3}-\text{H3}\cdots\text{N1}^{\text{ii}}$	0.95	2.53	3.449 (2)	163

Symmetry codes: (i)  $-x + \frac{1}{2}, -y + \frac{3}{2}, -z + 1$ ; (ii)  $-x, -y, -z + 1$ .

Data collection: *CrystalClear* (Rigaku/MS, 2005); cell refinement: *CrystalClear*; data reduction: *CrystalClear*; program(s) used to solve structure: *SHELXS97* (Sheldrick, 2008); program(s) used to refine structure: *SHELXL97* (Sheldrick, 2008); molecular graphics: *SHELXTL* (Sheldrick, 2008); software used to prepare material for publication: *CrystalStructure* (Rigaku/MS, 2006).

Supplementary data and figures for this paper are available from the IUCr electronic archives (Reference: RK2353).

## References

- Feng, J., Zhang, Z. Y., Wallace, M. B., Stafford, J. A., Kaldor, S. W., Kassel, D. B., Navre, M., Shi, L. H., Skene, R. J., Asakawa, T., Takeuchi, K., Xu, R. D., Webb, D. R. & Gwaltney, S. L. (2007). *J. Med. Chem.* **50**, 2297–2300.  
 Labuda, J., Ovadekova, R. & Galandova, J. (2009). *Mikrochim. Acta*, **164**, 371–377.  
 Rigaku/MS (2005). *CrystalClear*. Rigaku/MS Inc., The Woodlands, Texas, USA.  
 Rigaku/MS (2006). *CrystalStructure*. Rigaku/MS Inc., The Woodlands, Texas, USA.  
 Sheldrick, G. M. (2008). *Acta Cryst.* **A64**, 112–122.

## supplementary materials

*Acta Cryst.* (2012). E68, o1958 [doi:10.1107/S1600536812022891]

**2-Chloroquinazolin-4(3H)-one**

**Dong-Lei Cao, Fan-Yong Yan, Meng Wang, Chu-Ying Li and Li Chen**

**Comment**

Quinazolin-4(3H)-ones and related quinazolines are classes of fused heterocycles that are of considerable interest because of the diverse range of their biological properties, for example, anticancer, anti-inflammatory, diuretic, anticonvulsant and antihypertensive activities (Labuda *et al.*, 2009). The title compound (Fig. 1) consists of a quinazoline ring with an Cl atom at C4. The quinazoline heterobicycle is nearly planar, with a maximum deviation from the least-squares plane of 0.034 (2) Å. All bond lengths and angles are normal, atoms O1 and Cl lie in the 2-chloroquinazolin ring (C1-C8/N1/N2) plane. In addition, two intermolecular hydrogen bonding (classical N–H···O and non-classical C–H···N) (Table 1, Fig. 2), are effective in stabilizing the crystal structure.

**Experimental**

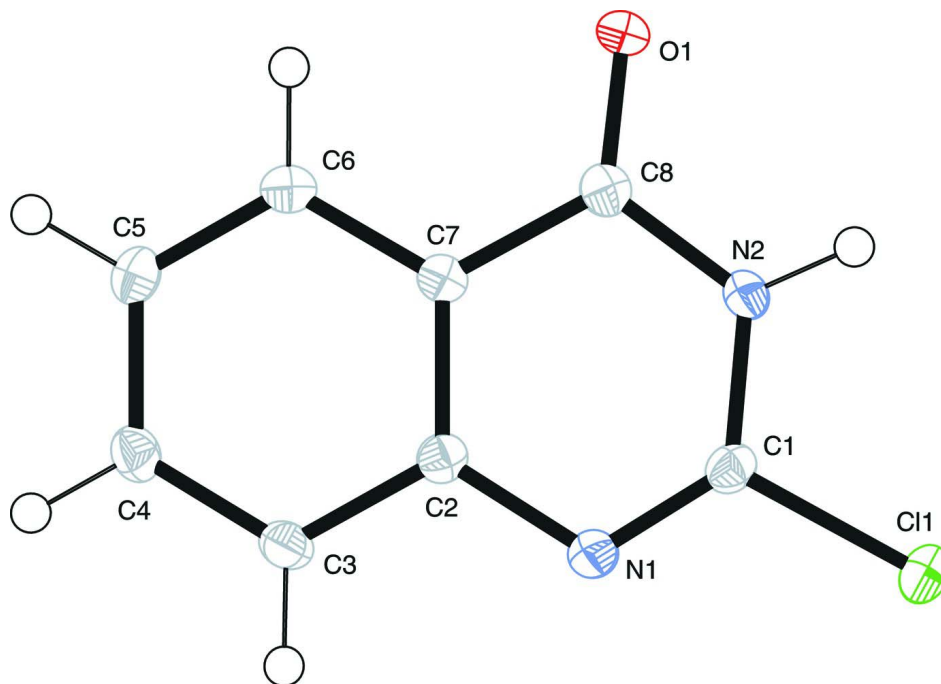
The title compound was prepared by following a reported procedure (Feng *et al.*, 2007). A suspension of 2,4-dichloroquinazolines (2.0 g, 1 mmol) was stirred in 2% aqueous sodium hydroxide solution (3 ml) for 3 h. Reaction mixture was diluted with water (6 ml) and filtered to remove unreacted 2,4-dichloroquinazoline. Filtrate was neutralized with dilute acetic acid, precipitate thus obtained was filtered and washed with water. The product was recrystallized from acetone / ethyl acetate (5:1) over 5 d at ambient temperature, gave colourless single crystals of 2-chloroquinazolin-4(3H)-one, suitable for X-ray analysis.

**Refinement**

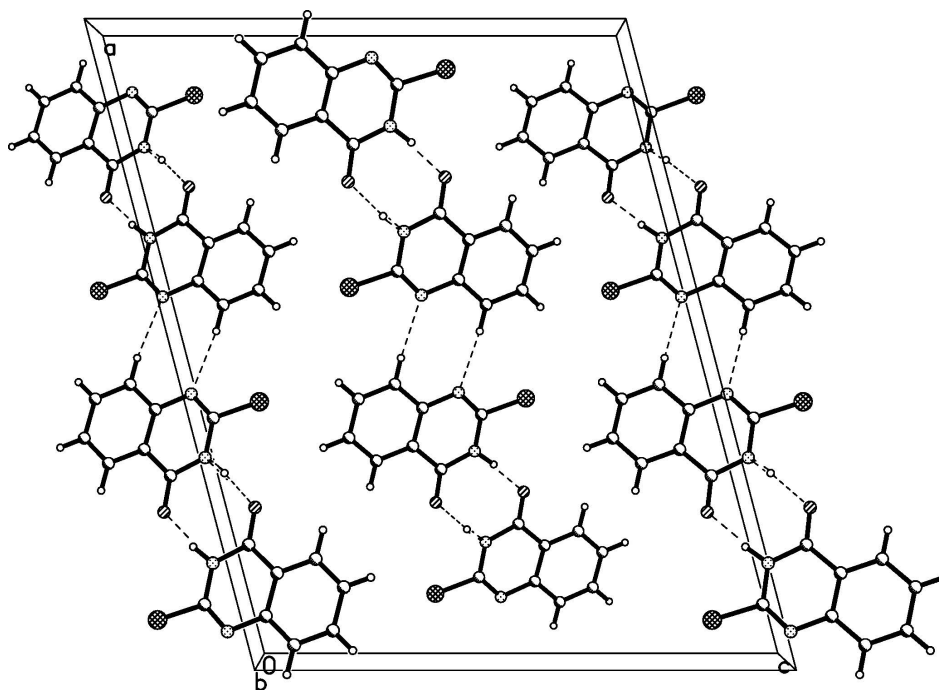
The H atoms based on C atoms were positioned geometrically at distances C–H = 0.93 Å and constrained to ride on their parent atoms with  $U_{\text{iso}}(\text{H}) = 1.2U_{\text{eq}}(\text{C})$ . The amino H atom was found from different Fourier map and refined isotropically.

**Computing details**

Data collection: *CrystalClear* (Rigaku/MSC, 2005); cell refinement: *CrystalClear* (Rigaku/MSC, 2005); data reduction: *CrystalClear* (Rigaku/MSC, 2005); program(s) used to solve structure: *SHELXS97* (Sheldrick, 2008); program(s) used to refine structure: *SHELXL97* (Sheldrick, 2008); molecular graphics: *SHELXTL* (Sheldrick, 2008); software used to prepare material for publication: *CrystalStructure* (Rigaku/MSC, 2006).

**Figure 1**

The molecular structure of title compound with the atom numbering scheme. Displacement ellipsoids are drawn with 50% probability level. H atoms are presented as spheres of arbitrary radius.

**Figure 2**

A packing diagram for title compound. Dashed lines indicate hydrogen bonds.

2-Chloroquinazolin-4(3H)-one

Crystal data

$C_8H_5ClN_2O$	$F(000) = 736$
$M_r = 180.59$	$D_x = 1.625 \text{ Mg m}^{-3}$
Monoclinic, $C2/c$	Mo $K\alpha$ radiation, $\lambda = 0.71073 \text{ \AA}$
Hall symbol: $-C 2yc$	Cell parameters from 2442 reflections
$a = 22.4315 (16) \text{ \AA}$	$\theta = 1.9\text{--}27.9^\circ$
$b = 3.7666 (6) \text{ \AA}$	$\mu = 0.46 \text{ mm}^{-1}$
$c = 18.0640 (13) \text{ \AA}$	$T = 113 \text{ K}$
$\beta = 104.682 (7)^\circ$	Prism, colourless
$V = 1476.4 (3) \text{ \AA}^3$	$0.20 \times 0.18 \times 0.14 \text{ mm}$
$Z = 8$	

Data collection

Rigaku Saturn CCD diffractometer	6933 measured reflections
Radiation source: rotating anode	1749 independent reflections
Multilayer monochromator	1430 reflections with $I > 2\sigma(I)$
Detector resolution: $14.63 \text{ pixels mm}^{-1}$	$R_{\text{int}} = 0.038$
$\omega$ and $\varphi$ scans	$\theta_{\text{max}} = 27.9^\circ$ , $\theta_{\text{min}} = 1.9^\circ$
Absorption correction: multi-scan ( <i>CrystalClear</i> ; Rigaku/MSO, 2005)	$h = -28 \rightarrow 27$
$T_{\text{min}} = 0.914$ , $T_{\text{max}} = 0.939$	$k = -4 \rightarrow 4$
	$l = -23 \rightarrow 23$

Refinement

Refinement on $F^2$	Secondary atom site location: difference Fourier map
Least-squares matrix: full	Hydrogen site location: inferred from neighbouring sites
$R[F^2 > 2\sigma(F^2)] = 0.036$	H atoms treated by a mixture of independent and constrained refinement
$wR(F^2) = 0.095$	$w = 1/[\sigma^2(F_o^2) + (0.0578P)^2]$
$S = 1.03$	where $P = (F_o^2 + 2F_c^2)/3$
1749 reflections	$(\Delta/\sigma)_{\text{max}} < 0.001$
113 parameters	$\Delta\rho_{\text{max}} = 0.45 \text{ e \AA}^{-3}$
0 restraints	$\Delta\rho_{\text{min}} = -0.23 \text{ e \AA}^{-3}$
Primary atom site location: structure-invariant direct methods	

Special details

**Geometry.** All s.u.'s (except the s.u. in the dihedral angle between two l.s. planes) are estimated using the full covariance matrix. The cell s.u.'s are taken into account individually in the estimation of s.u.'s in distances, angles and torsion angles; correlations between s.u.'s in cell parameters are only used when they are defined by crystal symmetry. An approximate (isotropic) treatment of cell s.u.'s is used for estimating s.u.'s involving l.s. planes.

**Refinement.** Refinement of  $F^2$  against ALL reflections. The weighted  $R$ -factor  $wR$  and goodness of fit  $S$  are based on  $F^2$ , conventional  $R$ -factors  $R$  are based on  $F$ , with  $F$  set to zero for negative  $F^2$ . The threshold expression of  $F^2 > \sigma(F^2)$  is used only for calculating  $R$ -factors(gt) etc. and is not relevant to the choice of reflections for refinement.  $R$ -factors based on  $F^2$  are statistically about twice as large as those based on  $F$ , and  $R$ -factors based on ALL data will be even larger.

Fractional atomic coordinates and isotropic or equivalent isotropic displacement parameters ( $\text{\AA}^2$ )

	$x$	$y$	$z$	$U_{\text{iso}}^*/U_{\text{eq}}$
Cl1	0.087385 (18)	0.57099 (12)	0.36030 (2)	0.02301 (15)
O1	0.25626 (5)	0.5555 (3)	0.58943 (6)	0.0200 (3)
N1	0.07663 (6)	0.3042 (4)	0.48893 (7)	0.0178 (3)

N2	0.17290 (6)	0.5527 (4)	0.48745 (7)	0.0165 (3)
C1	0.11297 (7)	0.4595 (4)	0.45572 (9)	0.0164 (3)
C2	0.10115 (7)	0.2222 (4)	0.56609 (8)	0.0155 (3)
C3	0.06280 (7)	0.0601 (4)	0.60639 (9)	0.0183 (3)
H3	0.0211	0.0084	0.5814	0.022*
C4	0.08592 (7)	-0.0240 (4)	0.68250 (9)	0.0186 (3)
H4	0.0597	-0.1318	0.7098	0.022*
C5	0.14730 (7)	0.0467 (4)	0.72020 (9)	0.0179 (3)
H5	0.1626	-0.0140	0.7726	0.021*
C6	0.18533 (7)	0.2042 (4)	0.68100 (9)	0.0172 (3)
H6	0.2272	0.2508	0.7063	0.021*
C7	0.16281 (6)	0.2959 (4)	0.60432 (8)	0.0144 (3)
C8	0.20165 (7)	0.4738 (4)	0.56241 (9)	0.0166 (3)
H1	0.1956 (9)	0.652 (6)	0.4567 (11)	0.042 (6)*

Atomic displacement parameters ( $\text{\AA}^2$ )

	$U^{11}$	$U^{22}$	$U^{33}$	$U^{12}$	$U^{13}$	$U^{23}$
C11	0.0253 (2)	0.0286 (3)	0.0141 (2)	-0.00270 (16)	0.00309 (15)	0.00145 (16)
O1	0.0127 (5)	0.0272 (6)	0.0195 (6)	-0.0031 (5)	0.0029 (4)	0.0031 (5)
N1	0.0165 (6)	0.0217 (7)	0.0150 (6)	-0.0028 (5)	0.0036 (5)	-0.0015 (6)
N2	0.0151 (6)	0.0201 (7)	0.0154 (6)	-0.0020 (5)	0.0061 (5)	-0.0002 (5)
C1	0.0171 (7)	0.0178 (8)	0.0136 (7)	0.0007 (6)	0.0028 (6)	-0.0023 (6)
C2	0.0166 (7)	0.0153 (8)	0.0147 (7)	0.0003 (6)	0.0040 (6)	-0.0022 (6)
C3	0.0152 (7)	0.0207 (8)	0.0196 (8)	-0.0032 (6)	0.0054 (6)	-0.0016 (7)
C4	0.0200 (8)	0.0203 (8)	0.0177 (8)	-0.0016 (6)	0.0087 (6)	-0.0003 (6)
C5	0.0220 (8)	0.0177 (8)	0.0141 (7)	0.0021 (6)	0.0047 (6)	0.0004 (6)
C6	0.0148 (7)	0.0178 (8)	0.0182 (7)	-0.0001 (6)	0.0028 (6)	-0.0020 (6)
C7	0.0145 (7)	0.0132 (8)	0.0161 (7)	0.0004 (6)	0.0049 (6)	-0.0021 (6)
C8	0.0174 (7)	0.0157 (8)	0.0176 (7)	0.0014 (6)	0.0060 (6)	-0.0010 (6)

Geometric parameters ( $\text{\AA}$ ,  $^\circ$ )

C11—C1	1.7249 (16)	C3—C4	1.378 (2)
O1—C8	1.2370 (18)	C3—H3	0.9500
N1—C1	1.2706 (19)	C4—C5	1.398 (2)
N1—C2	1.3971 (19)	C4—H4	0.9500
N2—C1	1.3669 (19)	C5—C6	1.374 (2)
N2—C8	1.3766 (19)	C5—H5	0.9500
N2—H1	0.92 (2)	C6—C7	1.392 (2)
C2—C3	1.400 (2)	C6—H6	0.9500
C2—C7	1.408 (2)	C7—C8	1.455 (2)
C1—N1—C2	115.79 (13)	C3—C4—H4	119.4
C1—N2—C8	121.52 (13)	C5—C4—H4	119.4
C1—N2—H1	119.1 (12)	C6—C5—C4	119.64 (14)
C8—N2—H1	119.2 (12)	C6—C5—H5	120.2
N1—C1—N2	126.93 (14)	C4—C5—H5	120.2
N1—C1—C11	119.55 (12)	C5—C6—C7	120.25 (14)
N2—C1—C11	113.53 (11)	C5—C6—H6	119.9

N1—C2—C3	118.46 (13)	C7—C6—H6	119.9
N1—C2—C7	122.36 (14)	C6—C7—C2	120.18 (14)
C3—C2—C7	119.18 (14)	C6—C7—C8	121.19 (13)
C4—C3—C2	119.58 (14)	C2—C7—C8	118.62 (14)
C4—C3—H3	120.2	O1—C8—N2	120.31 (14)
C2—C3—H3	120.2	O1—C8—C7	124.97 (14)
C3—C4—C5	121.16 (14)	N2—C8—C7	114.72 (13)
C2—N1—C1—N2	0.1 (2)	C5—C6—C7—C8	177.88 (14)
C2—N1—C1—C11	179.76 (11)	N1—C2—C7—C6	-179.03 (14)
C8—N2—C1—N1	1.8 (3)	C3—C2—C7—C6	0.8 (2)
C8—N2—C1—C11	-177.85 (11)	N1—C2—C7—C8	2.0 (2)
C1—N1—C2—C3	178.19 (13)	C3—C2—C7—C8	-178.21 (13)
C1—N1—C2—C7	-2.0 (2)	C1—N2—C8—O1	178.72 (13)
N1—C2—C3—C4	179.88 (14)	C1—N2—C8—C7	-1.7 (2)
C7—C2—C3—C4	0.1 (2)	C6—C7—C8—O1	0.5 (2)
C2—C3—C4—C5	-0.6 (2)	C2—C7—C8—O1	179.48 (15)
C3—C4—C5—C6	0.3 (2)	C6—C7—C8—N2	-179.07 (14)
C4—C5—C6—C7	0.5 (2)	C2—C7—C8—N2	-0.1 (2)
C5—C6—C7—C2	-1.1 (2)		

Hydrogen-bond geometry ( $\text{\AA}$ ,  $^\circ$ )

$D-H\cdots A$	$D-H$	$H\cdots A$	$D\cdots A$	$D-H\cdots A$
N2—H1 $\cdots$ O1 <sup>i</sup>	0.92 (2)	1.88 (2)	2.7840 (17)	166.5 (19)
C3—H3 $\cdots$ N1 <sup>ii</sup>	0.95	2.53	3.449 (2)	163

Symmetry codes: (i)  $-x+1/2, -y+3/2, -z+1$ ; (ii)  $-x, -y, -z+1$ .